

Primary Framing



When projects demand long spans, open interiors or complex load conditions, Varco Pruden Primary Framing options deliver the engineered strength builders rely on to move forward with confidence. Each frame is custom-designed to match the exact requirements of the building, helping teams balance performance, efficiency and cost.

More than steel, primary framing systems are built on trust. Engineered steel and seamless integration with VP systems reduce risk throughout design and construction. The result is a structure that erects accurately, performs reliably and delivers long-term value owners can count on for decades.

Let's build.

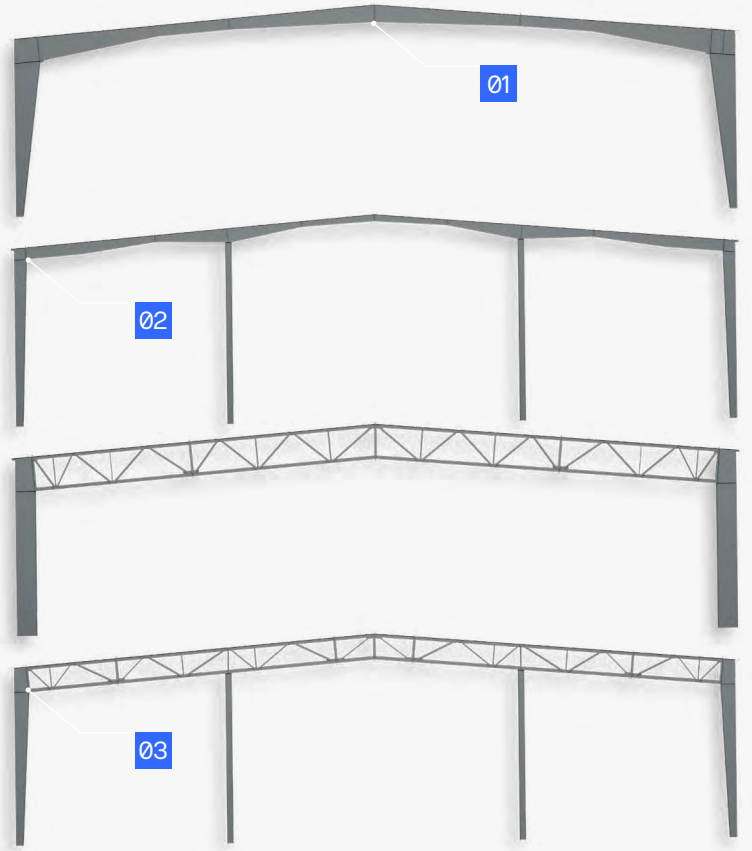
[VP.com](https://www.vp.com)

Key Benefits

- **Engineered Strength**
VP Building systems provide the structural foundation for every building.
- **Project-Specific Performance**
Frames custom-designed to meet exact load and code requirements.
- **Design Flexibility**
Clear-span, continuous beam and open web configurations are available options.
- **Faster Erection**
Precise detailing improves fit and field efficiency.
- **Integrated Systems**
Framing works seamlessly with VP roof, wall and secondary components.

Product Features

- 01 **Multiple configurations** available in clear-span, continuous beam and open-web truss.
- 02 **Custom-engineered** for specific geometry, loading and code requirements.
- 03 **Design options;** choose from tapered and straight columns.



Specifications

Primary Framing

Structural Type	Primary framing including Rigid Frame, Continuous Beam, Truss Beam, Continuous Truss
Structural Role	Main load-carrying skeleton of the building
Member Types	Engineered 3-plate steel in straight, tapered and reverse taper columns
Standard Size	Multiple eave height options, clear spans up to 300' wide
Standard Material & Finish	Three-plate steel with factory applied primer or galvanizing option
Integration	Integrates with VP roof and wall systems
Warranty	Standard Varco Pruden warranty

